

WHEN DISASTER STRIKES ARE YOU PREPARED?

**SAVE TIME AND MONEY BY PROTECTING YOUR
INVESTMENT WITH THIS IRRIGATION EQUIPMENT POLICY**

**COVERAGE FOR MOST
BRANDS OF PIVOTS**

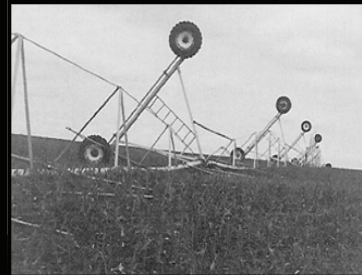
**SIMPLIFIED CLAIMS
PROCESS.**

Teeter Irrigation is the
Adjuster and repairman.

**FAST IN HOUSE
APPROVAL MEANS
REPAIRS DONE SOONER.**



Cordy Rosales



Kandi Hoeffner

(620) 353-1111

(620) 675-8330

CONTACT

**CORDY ROSALES OR KANDI HOEFFNER
TODAY FOR MULTI-PERIL COVERAGE**

**HAIL - FIRE - LIGHTNING - FLOOD - WIND TORNADO
THEFT - VANDALISM - COLLISION**

**MECHANICAL
BREAKDOWN
COVERAGE**

Covers damages caused by
failure of the alignment system
components.

**REPLACEMENT COST
COVERAGE**

Insurance to replacement
value. No depreciation on
repairs.

CHOICE OF DEDUCTIBLES

\$200 \$500 \$1000 \$2500



2729 W. OKLAHOMA, ULYSSES, KS. 67880

